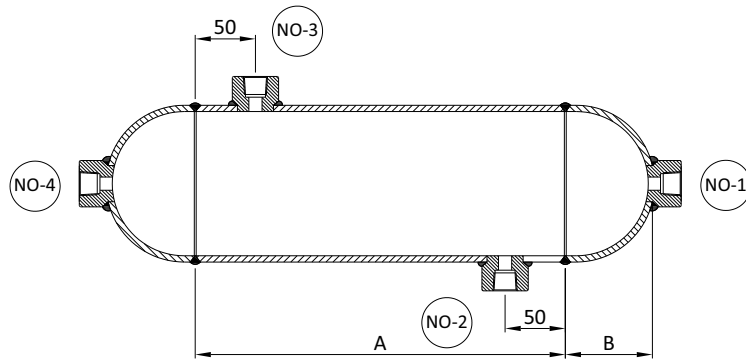


Instrumxx Industries

Manufacturer & Exporters



CONDENSATE POT



Specification :

Material of Construction (MOC) : Stainless Steel, Carbon Steel, Alloy Steel & special alloys material like Monel & Inconel.

Size : Manufactured from Seamless Pipe 2", 3", 4" NB, Schedule 40, 80, 160 & XXS.

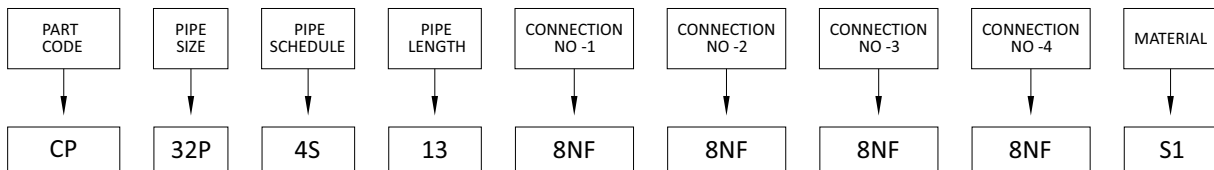
End connection : SW & Screwed.

Testing : Tested as given below.

MATERIAL	Schedule 40		Schedule 80		Schedule 160		Schedule XXS
	Kg/cm2	PSI	Kg/cm2	PSI	Kg/cm2	PSI	
ASTM A106 GR.B	80	1150	125	1800	210	3000	As per request
ASTM A335 P11/P22	80	1150	125	1800	210	3000	
ASTM A312-TP316/304	90	1350	150	2200	210	3000	

PIPE SIZE	SCHEDULE	A		B
		OPTION-1 (STD.)	OPTION-2	
2"	40	135	200	38
	80	135	200	38
	160	135	200	44
3"	40	135	200	51
	80	135	200	51
	160	135	200	64
4"	40	135	200	64
	80	135	200	64
	160	135	200	76

Ordering Information :



PART CODE DESIGNATOR
CONDENSATE POT.....CP

PIPE SIZE DESIGNATOR
2".....32P
3".....48P
4".....64P

PIPE SCHEDULE DESIGNATOR
40.....4S
80.....8S
160.....16S

PIPE LENGTH DESIGNATOR
135.....13
200.....20

CONNECTION-1 DESIGNATOR
1/2" NPTF.....8NF
3/4" NPTF.....12NF
1/2" SW.....8SW
3/4" SW.....12SW

CONNECTION-2 DESIGNATOR
1/2" NPTF.....8NF
3/4" NPTF.....12NF
1/2" SW.....8SW
3/4" SW.....12SW

CONNECTION-3 DESIGNATOR
1/2" NPTF.....8NF
3/4" NPTF.....12NF
1/2" SW.....8SW
3/4" SW.....12SW

CONNECTION-4 DESIGNATOR
1/2" NPTF.....8NF
3/4" NPTF.....12NF
1/2" SW.....8SW
3/4" SW.....12SW

MATERIAL DESIGNATOR
ASTM A106.....S1
ASTM A312 TP316.....S2
ASTM A312 TP304.....S3
MONEL.....S4
INCONEL.....S5

Note : Product code for Condensate Pot shall be provided on submission of our drawing.

*IBR approved Condensate Pot are available on request





Instrum 
XTRA QUALITY - XTRA ENDURANCE

Gala No. 3, Ground Floor, Rajprabha Landmark, industrial Estate Bldg No. 4, Sativali Road, Boidapada,
Vasai East, Palghar, Maharashtra – 401208.

+91 98201 01803, +91 99304 82856 | Info@instrumxx.co.in, sales@instrumxx.co.in

www.instrumxx.co.in